

# GSH and Thiols for Microdialysis

## < HPLC Conditions >

HPLC-ECD system	HTEC-510
Separation Column	Eicompak SC-5ODS ( $\varnothing 2.1 \times 150$ mm)
Precolumn for sample	PC-03-AC ( $\varnothing 3.0 \times 4.0$ mm)
Precolumn for mobile phase	PC-04-AC ( $\varnothing 4.0 \times 5.0$ mm)
Mobile Phase	100 mM phosphate buffer (pH 2.5) – Methanol (99 : 1, v/v) 100 mg/L sodium octane sulfonate (SOS) and 5 mg/L EDTA-2Na
Flow rate	230 $\mu$ L/min
Column Temp.	25 °C
Working Electrode	WE-AU (Gold)
Gasket	GS-50
Applied potential	+600 mV vs. Ag/AgCl
Time Constant	3.0 sec

### Mobile Phase 1000 mL

100 mM phosphate buffer (pH 2.5)	Methanol	Sodium Octane Sulfonate (SOS)	EDTA · 2Na
990 mL	10 mL	100 mg	5 mg

### 100 mM phosphate buffer (pH 2.5) 1000 mL

NaH <sub>2</sub> PO <sub>4</sub> ·2H <sub>2</sub> O	phosphoric acid	H <sub>2</sub> O
15.19 g	3 mL	1000 mL

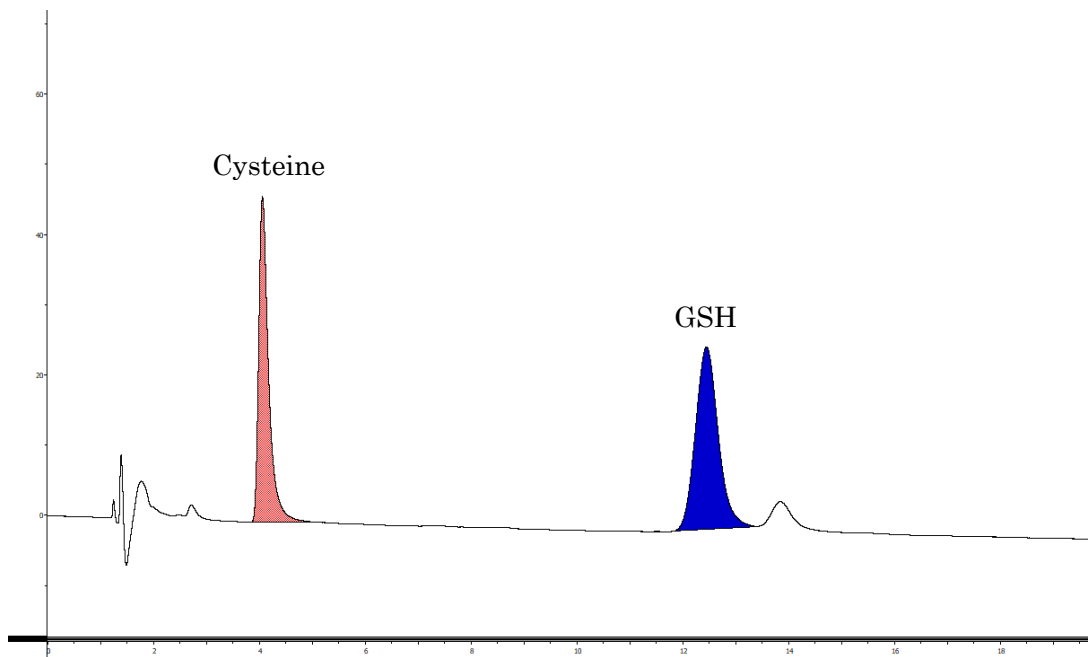


Fig. 1 Standard (100pg/inj.) Chromatogram.

**Eicom Corporation HQ**

113 Kita Enmenden-cho Shimotoba, Fushimi-ku Kyoto, Japan 612-8497

<https://www.eicom.co.jp/>